



质量为先，服务为诚
QUALITY FIRST, SERVICE IS SINCERE



CHEMICAL FIBER
MACHINERY
MANUFACTURING



常熟市苏鸿机械制造有限公司
Changshu Suhong Machinery Co.,Ltd.

江苏省常熟市董浜镇安庆路206号
No.206 Anqing Road, Dongbang Town, Changshu City,
Jiangsu Province

+86-512-52639577 / +86-512-52638488

+86-512-52639599 www.cs-suhong.com

salab@sina.cn / salac@sina.cn

www.cs-suhong.com

化纤设备
专业制造

常熟市苏鸿机械制造有限公司
Changshu Suhong Machinery Co.,Ltd.

常熟市苏鸿机械制造有限公司是国内较大的化纤设备制造商之一，凭借在化纤设备领域多年的经验，为客户提供全方位的服务。

公司位于常熟市董浜镇，现有员工 200 多人，其中高级技术人员 80 多名，具备从工程设计—设备制造—安装调试—售后服务成套的工程实力。

主要从事：熔融纺氨纶丝，涤纶 POY 民用丝，涤纶 FDY 民用丝，涤纶工业丝，丙纶民用丝和工业丝，锦纶 POY 民用丝，涤纶锦纶复合纺等产品的工程设计和设备制造。

公司致力于制造最好质量的产品，最佳的售后服务，期待与海内外客户广泛合作，共创化纤工程设备和技术的新辉煌。

公司简介

About Us



“

奉行“质量为先，服务为诚”的理念。真诚的为客户提供最为合理的技术及服务方案。

Pursue the concept of "quality first, service is sincere". Sincerely to provide customers with the most reasonable technology and service solutions.

”

Changshu SUHONG Machinery Co.Ltd.is one of the largest chemical fiber machinery manufacturers in China, with many years of experiences in chemical fiber machinery field, we provide the omni-directional service for the customers.

SUHONG is located in changshu city dongbang town, has more than 200 staff, senior technicians more than 80. We have the complete strength from engineering design-equipment manufacturing-installation and commissioning-after sale service.

SUHONG mainly supplying engineering design and equipment manufacturing of: Melt Spinning Spandex, PET POY, PET FDY,PET Industrial yarn, PP POY/FDY, Nylon POY, PET and Nylon compsite spinning.

SUHONG committed to providing the best quality products, the best after-sales service, looking forward to extensive cooperation with customers at home and abroad, to create new splendor for chemical fiber equipment and technology.



生产装备

Production Equipment

产品质量决定企业的成败。从企业诞生起苏鸿机械便以“质量为先，服务为诚”作为公司的经营理念。真诚的为客户提供最为合理的技术及服务方案。

生产中严格执行国际质量标准体系和行业标准要求，从原材料采购到产品出厂，每一个环节均采用科学、先进的技术措施，严格控制产品的制造质量。



各类数控机床加工的零件，其加工精度有效的保证了一致性，互换性好。

The machining accuracy of the parts processed by various kinds of CNC machine tools effectively ensures the consistency and good interchangeability.



机械设备一应俱全，可满足纤维机械所有零件加工之需，换性好。

Mechanical equipment is available, can meet the needs of all parts of fiber machinery processing, good changeability.



采用高精度下料工艺，利于全面推行计算机辅助制造，确保质量、工效。

The high precision cutting process is conducive to the full implementation of computer aided manufacturing to ensure quality and efficiency.



Product quality determines the success or failure of an enterprise. Since the birth of the enterprise, Suhong machinery has taken "quality first, service for honesty" as the company's business philosophy. Sincerely to provide customers with the most reasonable technology and service solutions.

Strict implementation of international quality standard system and industry standard requirements in production, from raw material procurement to product factory, each link adopts scientific and advanced technical measures to strictly control the manufacturing quality of products.

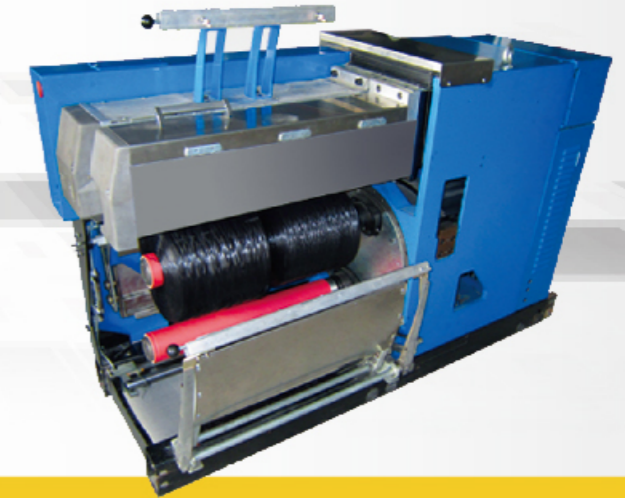


型号 Model	品种 Type	夹头长度(mm) Chuck Length	机械速度(m/min) Mechanical Speed	筒管尺寸(mm) Size of Tube	最大卷装直径(mm) Max size of Package	最小安装间距(mm) Min Pitch	丝饼数量 Ends Qty	动程及卷装重量 (PET) Stroke & Weight(PET)
SH312	氨纶(Spandex)	690	1000	73.5/85	200	600	12	45mm*0.5kg
SH312A	氨纶(Spandex)	690(自动卷绕头)	1000	73.5/85	200	600	12	45mm*0.5kg
SH316A	氨纶(Spandex)	920(自动卷绕头)	1000	73.5/85	200	600	16	45mm*0.5kg
SH606	涤纶(Polyester) 丙纶 (Polypropylene) 锦纶(PA6)	1260(手动卷绕头)	5500	112/126	430	525	6	180mm*22kg
SH608							8	130mm*16kg
SH610							10	100mm*12kg
SH612							12	82mm*10kg
SH616	16	56mm*7kg						
SH706	涤纶(Polyester) 丙纶 (Polypropylene) 锦纶(PA6)	1260(自动卷绕头)	5500	112/126	430	700	6	180mm*22kg
SH708							8	130mm*16kg
SH712							12	82mm*10kg
SH716							16	56mm*7kg
SH808	涤纶(Polyester) 丙纶 (Polypropylene) 锦纶(PA6)	1380(自动卷绕头)	5500	112/126 120/134	430	750	8	145mm*17kg
SH812							12	90mm*11kg
SH816							16	65mm*8kg
SH910	涤纶(Polyester) 锦纶(PA6)	1500(自动卷绕头)	5500	112/126 120/134	430	800	10	125mm*15kg
SH912							12	100mm*12kg
SH916							16	73mm*9kg
SH920							20	58mm*7kg
SH9108	涤纶(Polyester) 拨叉	1500(自动卷绕头)	5500	120/134 112/126	430	800	10	125mm*15kg
SH9128							12	100mm*12kg
SH1012	涤纶(Polyester)	1800(自动卷绕头)	3500	120/134	430	900	12	125mm*15kg

01 SH3 系列熔纺氨纶卷绕头
SH3 Series Melt Spinning Spandex Yarn Winder



SH5系列工业丝自动卷绕头 02
SH5 Series Auto Doffing Winder for Industrial Yarn



化纤卷绕头系列介绍

化纤卷绕头系列介绍

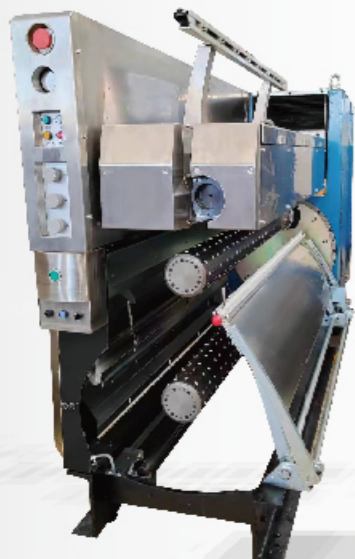
Brief Introduction Of Take-Up Winders

SH3/5/6/7/8/9/10系列卷绕头

- SH3/5/6/7/8/9/10 系列卷绕头主要应用于涤纶, 锦纶, 丙纶等切片通过熔融方式制成长丝的生产。
- 该系列卷绕头通过对机械结构的优化整合, 外观美观大方, 操作使用方便, 性能可靠维护简便。
- 主要元器件采用国内外知名品牌的优质产品, 整机稳定性高, 通用性强。
- 独具丝饼定重定长的特点, 为客户提供最具性价比的产品。

SH3/5/6/7/8/9/10 Series Winders

- SH3/5/6/7/8/9/10 Series Winders are suitable for producing PET, Nylon, PP filament yarns.
- Winders have perfect appearance, convenient operation, reliable performance and easy maintenance through integration and optimization of mechanical structure.
- The main components adopted high quality of domestic and international famous brand to make stable performance and strong commonality.
- Program can set bobbin weight and length to provide the most cost-effective products to our customers.



Brief Introduction Of Take-Up Winders

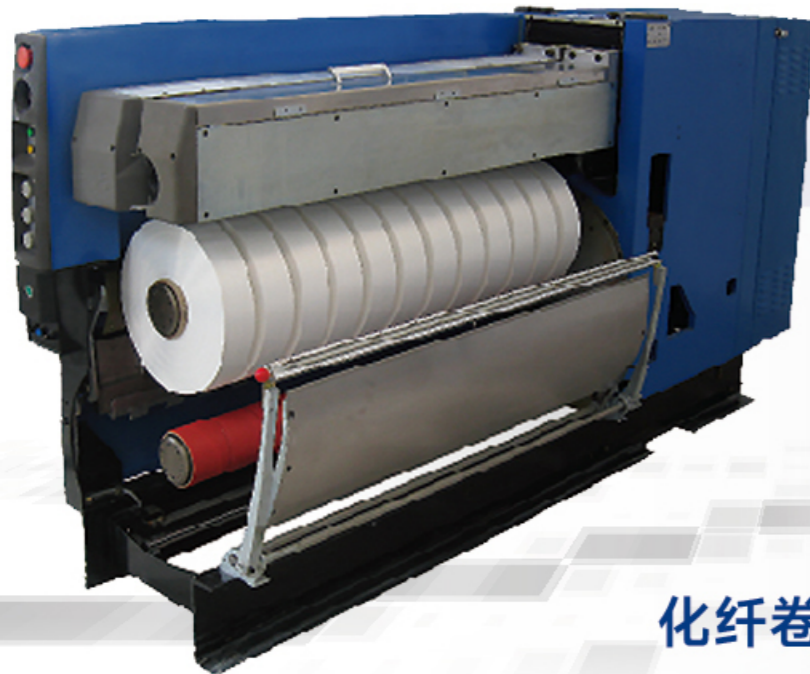


03 SH7/8/9/10 系列自动卷绕头
SH7/8/9/10 Series Auto Winder



SH9 伺服驱动自动卷绕头 04
SH9 Servo Motor Drived Auto Winder

型号 Model	SH6系列 SH6 Series	SH7系列 SH7 Series	SH8系列 SH8 Series	SH9系列 SH9 Series	SH10系列 SH10 Series
卷绕速度 Winding Speed	2500-5500m/min	2500-5500m/min	2500-5500m/min	2500-5500m/min	2500-5500m/min
轴长 Chuck Length	1260mm-1380mm	1260mm	1380mm	1500mm	1800mm
纸管尺寸(内径/外径) Tube Diameter	Φ112/Φ126	Φ112/Φ126	Φ112/Φ126 Φ120/Φ134	Φ112/Φ126 Φ120/Φ134	Φ120/Φ134
卷装外径 Package Size	Φ430	Φ430	Φ430	Φ430	Φ430
卷装重量/ 横动宽度 Package Weight /Stroke	6头/ends	22kg/180mm	22kg/180mm	25kg/200mm	/
	8头/ends	16kg/130mm	16kg/130mm	17kg/145mm	/
	10头/ends	12kg/100mm	12kg/100mm	13kg/110mm	/
	12头/ends	10kg/82mm	10kg/82mm	11kg/90mm	15kg/125mm
	16头/ends	7kg/56mm	7kg/56mm	7.5kg/60mm	9kg/73mm
	20头/ends	6kg/50mm	6kg/50mm	6.5kg/55mm	7kg/58mm

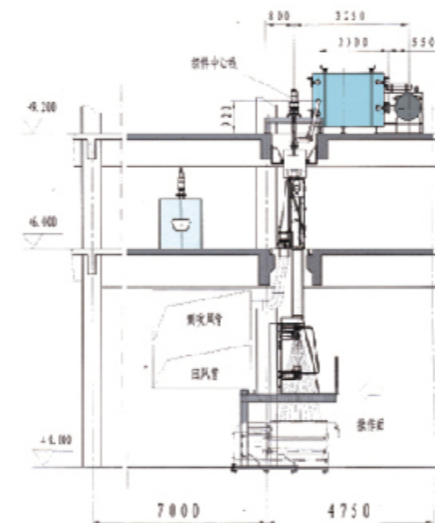


化纤卷绕头系列介绍

Brief Introduction Of
Take-Up Winders

涤纶POY纺丝设备

PET-POY Spinning Equipment



主要技术参数

- 纺丝方式: 螺杆纺丝
- 纤度范围/孔数: 33-330D/12-144F
- 组件形式: 下装杯型, 双胞胎组件
- 上油方式: 油嘴上油
- 导盘尺寸: Φ160*150mm
- 喷丝板尺寸: Φ70-105mm
- 机械速度: 2500-3500m/min
- 纺丝部位: 1-20位
- 部位间距: 600-1500mm
- 箱体形式: 平行纺丝及卷绕
- 卷筒数量: 8头、10头、12头、16头、20头
- 卷绕头型号: SH7/8/9/10系列自动卷绕头

Main Technical Parameters

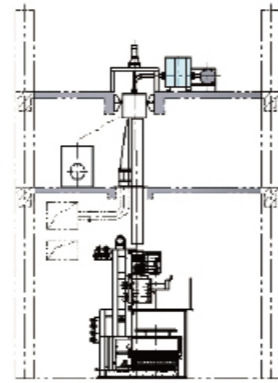
- Spinning Type: Extruder Spinning
- Denier/Filaments: 33-330D/12-144F
- Type of Spin Pack: Bottom mounted cylinder type. Double housing
- Oil Feeding Type: Finishing Spray System
- Size of Cold Godet: Φ160*150mm
- Size of Spinneret: Φ70-105mm
- Mechanical Speed: 2500-3500m/min
- Positions: 1-20Position
- Pitch: 600-1500mm
- Spinning Beam: Parallel Spinning
- Winder Ends: 8, 10, 12, 16, 20Ends
- Winder Type: SH7/8/9/10 Series Auto winder

主要技术参数

- 纺丝方式: 螺杆纺丝
- 纤度范围/孔数: 33-330D/12-144F
- 组件形式: 下装杯型, 双胞胎组件
- 上油方式: 油嘴上油
- 牵伸辊尺寸: $\Phi 220 \times 350$ mm
- 喷丝板尺寸: $\Phi 50 \times 110$ mm
- 机械速度: 3500-5000m/min
- 纺丝部位: 1-16位
- 部位间距: 800-1400mm
- 箱体形式: 平行纺丝及卷绕
- 卷筒数量: 8头、10头、12头、16头、20头
- 卷绕头型号: SH7/8/9/10系列自动卷绕头

Main Technical Parameters

- Spinning Type: Extruder Spinning
- Denier/Filaments: 33-330D/12-144F
- Type of Spin Pack: Bottom mounted cylinder type. Double housing
- Oil Feeding Type: Finishing Spray System
- Size of Drawing Godet: $\Phi 220 \times 350$ mm
- Size of Spinneret : $\Phi 50 \times 110$ mm
- Mechanical Speed : 3500-5000m/min
- Positions : 1-16Position
- Pitch : 800-1400mm
- Spinning Beam : Parallel Spinning
- Winder Ends : 8, 10, 12, 16, 20Ends
- Winder Type : SH7/8/9/10 Series Auto winder



涤纶FDY纺丝设备

PET-FDY Spinning Equipment



锦纶POY纺丝设备

PA6 POY Spinning Equipment

主要特点

- 采用专为锦纶材质特殊设计的新型双金属机筒、螺杆，物料产出更稳定，更高效。
- 采用封闭式杯型组件的节能型箱体，更加节能。
- 新式行星式纺丝泵体，及单独驱动的油剂泵，计量更加精确。
- 伺服控制新型高速卷绕头，切换成功率更高，丝饼成型更佳。

Characteristic

- Special designed bimetallic screw & barrel for the PA6 material to make the output more effective and stable.
- New style spinning beam with enclosed couples saves more energy.
- Adopt new design of planetary spinning pump, and individual control of finishing pump system to make more precise measuring.
- Winders are driven by servo motors, more successful doffing and better bobbin shape.

主要技术参数

- 纺丝方式: 螺杆纺丝
- 纤度范围/孔数: 22-330D/6-144F
- 单丝纤度: 1.0-4.0 diler
- 组件形式: 下装杯型
- 上油方式: 油嘴上油
- 导盘尺寸: $\Phi 160 \times 150$ mm
- 喷丝板尺寸: $\Phi 50 \times 110$ mm
- 机械速度: 2500-5000m/min
- 卷筒数量: 8头、10头、12头、16头
- 卷绕头型号: SH7/8/9/10系列自动卷绕头

Main Technical Parameters

- Spinning Type: Extruder Spinning
- Denier/Filaments: 22-330D/6-144F
- Dpf: 1.0-4.0 diler
- Type of Spin Pack: Bottom mounted cylinder type
- Oil Feeding Type: Finishing Spray System
- Size of Cold Godet: $\Phi 160 \times 150$ mm
- Size of Spinneret : $\Phi 50 \times 110$ mm
- Mechanical Speed : 2500-5000m/min
- Winder Ends : 8, 10, 12, 16Ends
- Winder Type : SH7/8/9/10 Series Auto winder

主要用途
Main Application

该型复合纺丝机实用于多种双组份改性聚合物的单 / 双组份化合物, 如共纺型, 裂片超细型, 桔瓣型 POY 复合长丝, 圆型, 异型单组份 POY 长丝及特种组份长丝。

This composite spinning machine is used for producing multi-component filament yarn like: co-spinning type, split fine type, and orange-petal type composite filament, and round, special type single component yarn.

主要特点
Characteristic

该系统由两组独立系统构成, 系统配有交流变频驱动的 LTM 螺杆挤出机, 带有静态混合器的熔体分配管路, 连续切换的过滤器, 复合式喷丝板, 高精度, 并带有监控记录功能的控制系统等专为复合纺设计的设备。

This line is consisted by two individual system equipped with AC driven LTM screw extruder, melt distributor with static mixer, continuous filter on line, composite spinneret set, with function of high precision monitoring records control system which is specially designed for composite spinning line.

主要技术参数

- 适用范围: 15D、20D、30D、40D
- 机械速度: 1000m/min
- 纺丝部位: 8位
- 部位间距: 600-900mm
- 箱体形式: 平行纺丝及卷绕
- 组件形式: 下装式
- 卷筒数量: 8头、12头、16头
- 卷绕头型号: SH3系列卷绕头

Main Technical Parameters

- Suitable Range: 15D、20D、30D、40D
- Mechanical Speed: 1000m/min
- Pitch: 8 Position
- Gauge: 600-900mm
- Spinning Beam: Parallel Spinning and Take-up Winding
- Type of Spin Pack: Bottom Mounted
- Winder Ends: 8、12、16 Ends
- Winder Type: SH3 Series Winder

本公司可根据客户需要采用双箱体, 三箱体形式设备, 以便客户灵活调节工艺生产多种形式的复合长丝。

we can offer the equipments which bases on customers' requires via adopt double spinning bean or triple spinning beam to make sure the customer can make different type of composite filament yarn.



双组份复合长丝纺丝设备

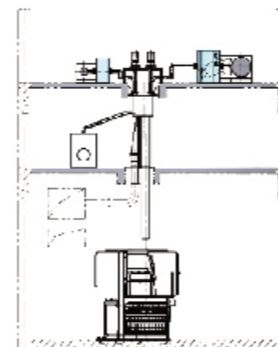
Composite Filament Spinning Equipment

主要技术参数

- 纺丝方式: 螺杆纺丝
- 纤度范围/孔数: 55-330D/24-144F
- 组件形式: 下装杯型
- 上油方式: 油嘴上油
- 导盘尺寸: $\Phi 160 \times 150$ mm
- 喷丝板尺寸: $\Phi 85-115$ mm
- 机械速度: 2500-4000m/min
- 卷筒数量: 6头、8头、10头
- 卷绕头型号: SH7/8/9/10系列自动卷绕头

Main Technical Parameters

- Spinning Type: Extruder Spinning
- Denier/Filaments: 55-330D/24-144F
- Type of Spin Pack: Bottom mounted cylinder type
- Oil Feeding Type: Finishing Spray System
- Size of Cold Godet: $\Phi 160 \times 150$ mm
- Size of Spinneret: $\Phi 85-115$ mm
- Mechanical Speed: 2500-4000m/min
- Winder Ends: 6、8、10 Ends
- Winder Type: SH7/8/9/10 Series Auto Winder



本公司生产的氨纶设备, 经公司多年研究和探索, 产品具有生产速度稳定, 丝锭成品质量好的特点。

Through years of research and exploration, our spandex production line has the features of running stable, good quality of final product.

熔纺氨纶纺丝设备

Melt Spinning Spandex Equipment

- 所使用的螺杆挤出机专为氨纶产品特别研发, 产量稳定性高。
- 采用国内外优质计量泵产品, 计量准确。
- 专用油剂喷淋, 冷却系统, 喷淋均匀, 冷却效果好。
- 独立设计的氨纶卷绕设备, 成品丝饼质地密实均匀。

- The extruder is special designed for the spandex yarn, which the output is high and stable.
- The melting pump adopted is from domestic and international famous brand, the quality is stable, and the measuring is precise.
- With customized finish oil spraying & cooling system, with high effective.
- Special designed spandex winding system, the yarn bobbin is dense and uniform.



BCF纺丝设备

BCF Spinning Equipment

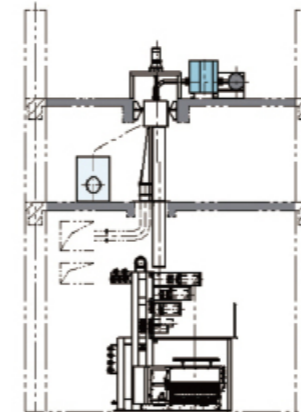
主要技术参数

- 纺丝方式: 螺杆纺丝
- 纤度范围: 600-3000D
- 组件形式: 下装杯型
- 冷却方式: 侧吹或环吹
- 牵伸辊数量: 3-6对
- 工艺温度: 50-220°C
- 喷丝板尺寸: $\Phi 80-200\text{mm}$
- 机械速度: 1000-2500m/min
- 卷筒数量: 2头、3头
- 卷绕头型号: SH3系列卷绕头

Main Technical Parameters

- Spinning Type: Extruder Spinning
- Denier: 600-3000D
- Type of Spin Pack: Bottom mounted cylinder type
- Cooling Type: Cross Quenching or Circular Quenching
- Qty of Drawing Godet: 3-6 Couples
- Process Temp: 50-220°C
- Size of Spinneret: $\Phi 80-200\text{mm}$
- Mechanical Speed: 1000-2500m/min
- Winder Ends: 2、3 Ends
- Winder Type: SH3 Series Winder

配合使用苏鸿 SH7/8/9/10 系列自动卷绕头, 具有切换成功率高, 废丝率低, 成型好等特点。
Equip with SUHONG SH7/8/9/10 series Auto Winders, with features of high successful doffing, low wastage, good bobbin shape.



主要技术参数

- 纺丝方式: 螺杆纺丝
- 纤度范围/孔数: 150-1500D/36-310F
- 单丝纤度: 2.0-7.0 ditex
- 组件形式: 下装杯型
- 上油方式: 油嘴上油或油轮上油
- 牵伸辊尺寸: $\Phi 220\text{mm}$
- 喷丝板尺寸: $\Phi 85-220\text{mm}$
- 机械速度: 1800-3500m/min
- 卷筒数量: 2头、4头、6头、8头
- 卷绕头型号: SH7/8/9/10系列自动卷绕头

Main Technical Parameters

- Spinning Type: Extruder Spinning
- Denier/Filaments: 150-1500D/36-310F
- Dpf: 2.0-7.0 ditex
- Type of Spin Pack: Bottom mounted cylinder type
- Oil Feeding Type: Finishing Spray System or Oil Roller
- Size of Drawing Godet: $\Phi 220\text{mm}$
- Size of Spinneret: $\Phi 85-220\text{mm}$
- Mechanical Speed: 1800-3500m/min
- Winder Ends: 2、4、6、8 Ends
- Winder Type: SH7/8/9/10 Series Auto Winder

PET、PA6 Industrial Yarn Spinning Equipment

涤纶、锦纶工业丝纺丝设备



SHJ系列 挤出机

SHJ Series Extruder



SHJ 系列挤出机主要应用于涤纶、锦纶、丙纶等切片通过熔融方式制成长丝的生产，具有产量高、温控精度高、操作简单的特点。作为 SH 系列纺丝设备的核心部件，我公司投入了大量的人力物力对 SHJ 系列挤出机进行了不断的研究和改进，通过不懈努力和探索，对该系列挤出机进行了大量的优化和改进。

SHJ series Extruders are suitable to producing chemical filament by PET/PA6 & PP chips. As it is the key component to the spinning equipment, we keep speeding a lot time and energy in the optimizing and improve the character of the extruder, to make it more effective and economic.

挤出机的特点 The characterizes of our extruder:

A 高容量 High Capacity

采用先进的挤出技术，使挤出机具有较高的剪切和粘合作用。在相同的驱动条件下，输出得到了很大的提高。

By produced advanced technology, the extruder with higher shearing and melting effect. Under the same driving condition the output is highly improved.

B 高精度 High Precision

采用高品质国内外知名品牌温控元件，优化系统设计，精度高。

By adopting high quality domestic and international famous brand temperature control components and optimizing the system designing the precision is high.

C 操作简单 Easy Operation

采用集中模块化控制系统。设备控制更人性化，更方便。

By adopting centralized and modular control system, the equipments control is more humanized and more easy.

型号 Model	螺杆直径 Screw Diameter	长径比 L/D	挤产量 Output (kg/h)	螺杆转速 Screw RPM	机头压力 Pressure (Mpa)	传动功率 Driving Power(Kw)	加热功率 Heating Power(Kw)	加热区段 Heating Section	加热电压 Heating Voltage	中心高 Centre Height(mm)	重量 Weight (Ton)
SHJ45/25	Φ45	25:1	10-38	20-80	15-25	7.5	8	3	220	340	1
SHJ50/25	Φ50	25:1	12-55	20-80	15-25	7.5	14	4	220	340	1.1
SHJ55/25	Φ55	25:1	14.5-65	20-80	15-25	15	14.4	4	220	340	1.2
SHJ65/25	Φ65	25:1	20-91	20-80	15-25	15	16	5	220	340	1.3
SHJ75/25	Φ75	25:1	30-100	20-80	15-25	18.5	21	5	220	410	1.6
SHJ80/25	Φ80	25:1	38-154	20-80	15-25	22	27	5	220	510	1.8
SHJ90/25	Φ90	25:1	49-196	20-70	15-25	45	30	5	220	510	2
SHJ105/25	Φ105	25:1	82-295	20-60	15-25	55	40	5	220	610	3
SHJ120/25	Φ120	25:1	111-388	20-60	15-25	75	47	6	220	660	3.5
SHJ135/25	Φ135	25:1	151-531	20-60	15-25	90	63	6	220	660	4.2
SHJ150/25	Φ150	25:1	191-605	20-60	15-25	110	81	6	380	710	5
SHJ160/25	Φ160	25:1	275-688	20-60	15-25	132	93.6	6	380	710	6
SHJ170/25	Φ170	25:1	310-800	20-60	15-25	160	104	6	380	720	8
SHJ180/25	Φ185	25:1	420-930	20-50	15-25	160	110	7	380	800	10
SHJ190/25	Φ190	25:1	460-980	20-50	15-25	180	132	7	380	900	11
SHJ200/25	Φ200	25:1	560-1050	20-50	15-25	220	150	7	380	1000	12

备注：当使用 PP、PA6 或者 100%PET 瓶片原料时，将根据物料具体情况使用长径比为 30:1 或者 28:1 的化纤挤出机，在订购产品时请根据实际情况选择。
Note: For PP, PA6 OR 100% Recycled Flakes Materials. Extruder L/D design should be 30:1 or 28:1 as per running materials, please select machine according to actual situation before order.

挤出机电控系统

Extruder Control System

- 挤出机的机头压力及温度控制系统采用日本进口仪表，精度高误差小。
- 驱动变频器及低压电器均采用国际知名品牌，电气系统运行安全可靠。
- 控制系统可根据客户的要求，实现单独控制，或者集中控制。
- Extruder head pressure and Temperature controlled by Japanese meter with high precision and low error.
- The drive inverters and low voltage components adopted from international famous brand for stable running condition.
- Control system can be designed individually and centralized as per customer requirement.



SHF系列熔体过滤器

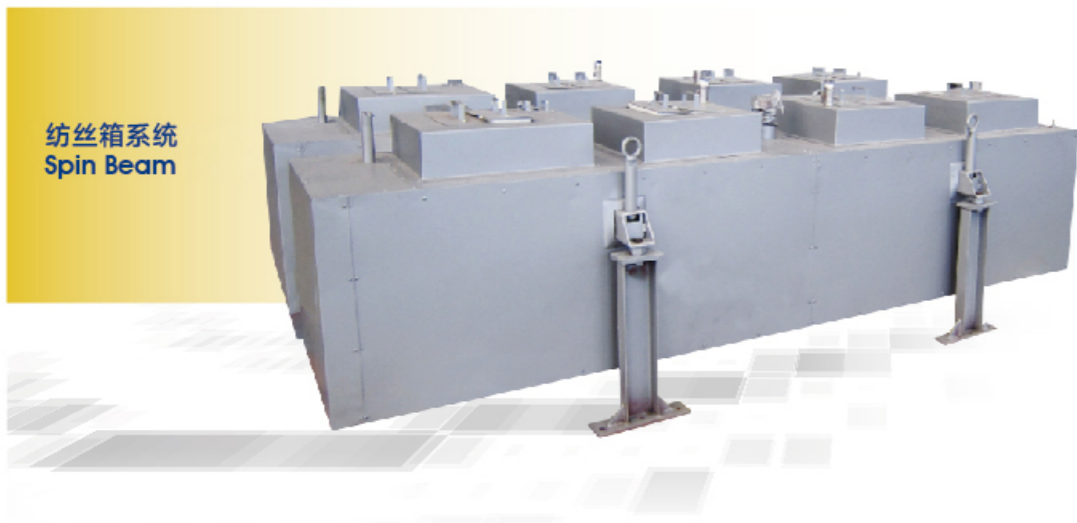
SHF Series Polymer Filters

型号 Model	最大压力 Max pressure (Mpa)	最大压差 Max pressure differential (Mpa)	热媒许用压力 Hot medium allowed pressure (Mpa)	允许温度 Allowed temperature (°C)	过滤面积 Filtration area (m²)	过滤芯规格及数量 Spec & Qty of candles	额定流量 Rated flow (kg/h)	适用螺杆直径 Suitable Extruder (mm)
SHF2T-0.5	25	6	0.22	315	2*0.5	Φ 35*425/4	100-150	55/65
SHF2T-1.05	25	6	0.22	315	2*1.05	Φ 35*425/7	230-300	80/90
SHF2T-1.5	25	6	0.22	315	2*1.5	Φ 35*525/7	280-400	105
SHF2T-1.95	25	6	0.22	315	2*1.92	Φ 35*425/13	400-500	105/120
SHF2T-2.34	25	6	0.22	315	2*2.34	Φ 35*485/13	500-700	120/135
SHF2T-3.0	25	6	0.22	315	2*3.0	Φ 35*485/15	600-800	150
SHF2T-3.5	25	6	0.22	315	2*3.5	Φ 35*485/19	700-900	160
SHF2T-4.0	25	6	0.22	315	2*4.0	Φ 35*525/19	800-1000	170
SHF4T-9.5/5.5	25	6	0.22	315	2*9.5 2*5.5	Φ 58*515/19 Φ 50*515/15	280-500	120/135/150
SHF4T-15/9.5	25	6	0.22	315	2*15 2*9.5	Φ 58*900/19 Φ 58*515/19	500-800	160/170/180

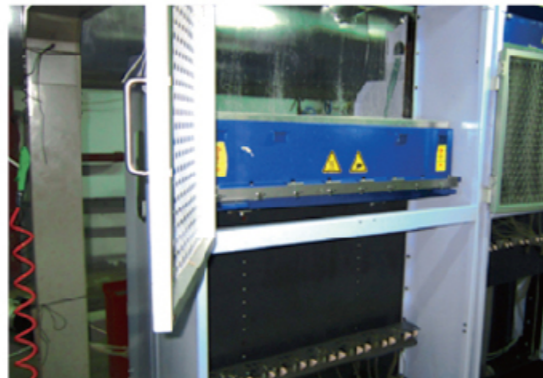
纺丝技术参数
Spinning Technical Data

纺丝头数 ends 位距 pitch 喷丝板直径 Spinnerate Diameter Model	5套下装杯型组件 最小位距 Bottom mounted Cylinder type Min.Pitch(5 ends)	6套下装杯型组件 最小位距 Bottom mounted Cylinder type Min.Pitch(6 ends)	8套下装杯型组件 最小位距 Bottom mounted Cylinder type Min.Pitch(8 ends)	10套下装杯型组件 最小位距 Bottom mounted Cylinder type Min.Pitch(10 ends)	12套下装杯型组件 最小位距 Bottom mounted Cylinder type Min.Pitch(12 ends)
Φ75	580	680	850	1050	1250
Φ80	600	700	900	1100	1300
Φ85	630	730	950	1150	1350
Φ90	660	800	1030	1250	1500
Φ95	700	830	1080	1320	1550
Φ100	730	850	1120	1350	1620
Φ105	750	900	1150	1420	1680

另有中Φ50, Φ60, Φ70型规格组件, 因篇幅原因不一列举。如因厂房大小限制, 另有双胞胎规格组件可供选择。
We have 50,60,70mm size spin pack which are not listed here. And Twins pack desian available for plant size limit.



纺丝箱系统
Spin Beam



环吹风系统
Circular Quenching



Engineering Project

工程实例